

Místo, datum:
Praha, 14. 7. 2020



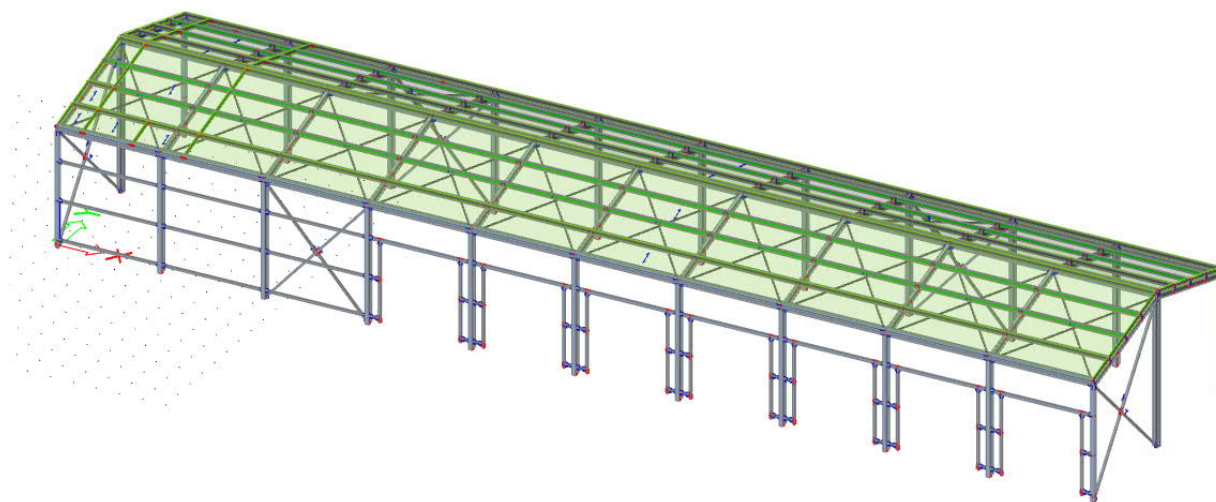
Stavba: Garážová stání, Pražská 917, Sušice

Vypracoval: Ing. Kovář Karel

Kontroloval: Ing. Tomáš Turský

Výpis materiálů (SO.02)

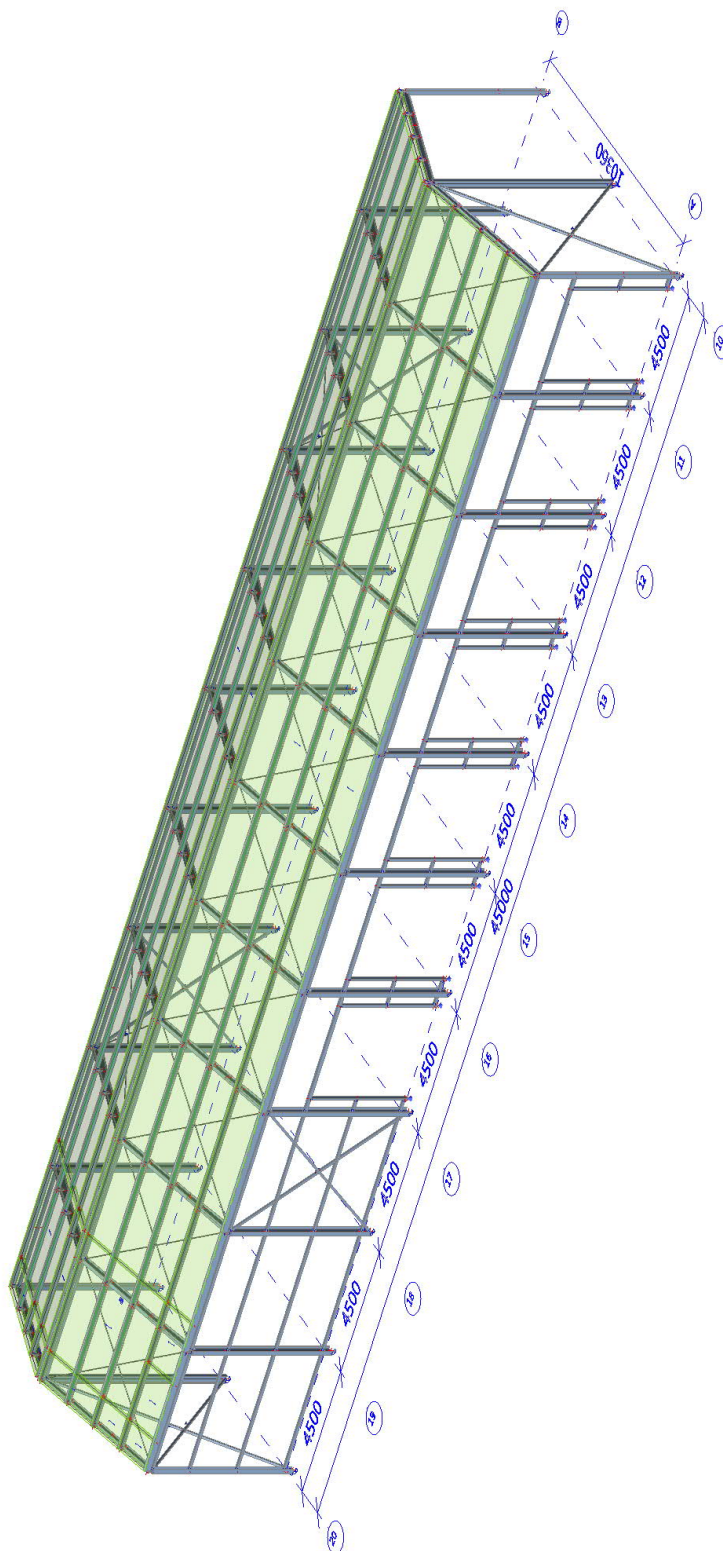
Tendrová dokumentace



Kancelář / Office:
Ruukki Building Systems, s.r.o.
Pekařská 695/10a
CZ-155 00, Praha 5
<https://www.ruukki.com/building-systems>

Fakturační adresa / Invoicing Address:
Ruukki Building Systems, s.r.o.
Pekařská 695/10a
CZ-155 00, Praha 5
CZ08130671

Model konstrukce



Výkaz hmotnosti - ocelová konstrukce

Selection: Named selection - Ocel

Type of sorting: Cross-section

Summary

Material	Mass [kg]	Surface [m ²]	Volume [m ³]
Steel	12231,1	366,410	1,5581e+00
Total	12231,1	366,410	1,5581e+00

Note: Value 'Surface' represents for 1D members the total exposed surface area, while for 2D members it corresponds only to the surface area of the centroidal plane.

Steel (1D)

Cross-section	Material	Length [m]	Unit mass [kg/m]	Mass [kg]	Surface [m ²]	Volume [m ³]
Př1 - IPE240	S 235	60,776	30,7	1865,4	56,019	2,3763e-01
ZT1 - RD24	S 235	168,267	3,5	597,3	12,654	7,6084e-02
S2 - IPE270	S 235	12,920	36,0	465,5	13,449	5,9303e-02
Př2 - Iw (300; 6; 150; 10; 280; 0) - Parametric	S 235	36,000	33,2	1193,7	38,664	1,5206e-01
S1 - IPE300	S 235	90,360	42,2	3816,2	104,811	4,8614e-01
ST1 - CFRHS80X80X4	S 355	135,000	9,2	1245,2	41,310	1,5863e-01
ZT2 - CFRHS70X70X4	S 235	71,438	8,0	569,2	19,002	7,2509e-02
Př3 - IPE200	S 235	21,506	22,4	481,1	16,519	6,1291e-02
S3 - HEA160	S 235	20,080	30,5	611,6	18,192	7,7910e-02
VY1 - CFRHS100X80X4	S 235	49,000	10,5	513,5	16,954	6,5415e-02
VY2 - CFRHS100X100X4	S 235	31,500	11,7	369,7	12,159	4,7092e-02
VY3 - CFRHS80X80X4	S 235	54,500	9,2	502,7	16,677	6,4037e-02
Total		751,346		12231,1	366,410	1,5581e+00

Výkaz hmotnosti - tenkostěnné vaznice

Selection: All

Filter: Layer = Vaznice

Type of sorting: Cross-section

Summary

Material	Mass [kg]	Surface [m ²]	Volume [m ³]
Steel	1909,1	302,741	2,4320e-01
Total	1909,1	302,741	2,4320e-01

Note: Value 'Surface' represents for 1D members the total exposed surface area, while for 2D members it corresponds only to the surface area of the centroidal plane.

Steel (1D)

Cross-section	Material	Length [m]	Unit mass [kg/m]	Mass [kg]	Surface [m ²]	Volume [m ³]
172Z 16 - General cross-section	S 450	81,000	4,1	332,7	53,233	4,2379e-02
172Z 15 - General cross-section	S 450	324,000	3,9	1247,5	212,868	1,5892e-01
170C 23 - General cross-section	S 450	45,000	7,3	328,9	36,640	4,1898e-02
Total		450,000		1909,1	302,741	2,4320e-01

Celková hmotnost

Ocelová konstrukce: 12231,1 x 1,15 (přípoje) = 14065,8 kg

Tenkostěnné vaznice: 1909,1 x 1,25 (přesahy + přípoje) = 2386,4 kg

Celkem: 16452,2 kg